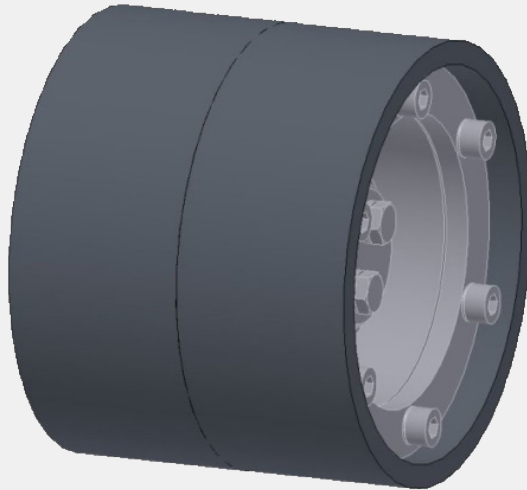


WEAR HIGH RESISTANT Danieli rollers with WC inserts for apron roller table (VCO)



R-WHR
>rollers for apron
roller table<

Everyday rolling mills are focused to improve performances. The apron roller table is one area where wear of standard rollers can cause different problems due to bar “jumping”, mainly when rolling smaller products (dia 8-10 mm). This phenomena is particularly problematic with the multi-strand slitting process.

Existing rollers will be replaced by new design featuring a roller with replaceable wear inserts.

The standard solution foresees the utilization of two inserts which could be mounted in two orientations each to further extend lifetime by giving four distinct wear areas.

Main features

- High hardness
- High resistance to wear for abrasion
- Extra long lifetime
- Replaceable WC inserts
- Complete interchangeability with the existing rollers
- Availability of tailor made solutions
- Possibility to keep the tangent distance very low in the roller table.

The new solution enables

- Saving in maintenance stoppages due to long lifetime of the rollers
- Reduced bar «jumping» leading to increase production speed and reduced cobbles and bar crossing/knotting (roping), thus improving downstream bar alignment and cut-to-length operations.
- Process stabilization thanks to decreased wear of rollers, reducing grooving and maintaining the design distance between roller tangent and roller table.



Apron roller table

High wear on STANDARD rollers

R-WHR rollers still new after 150,000-tons of rebars.